

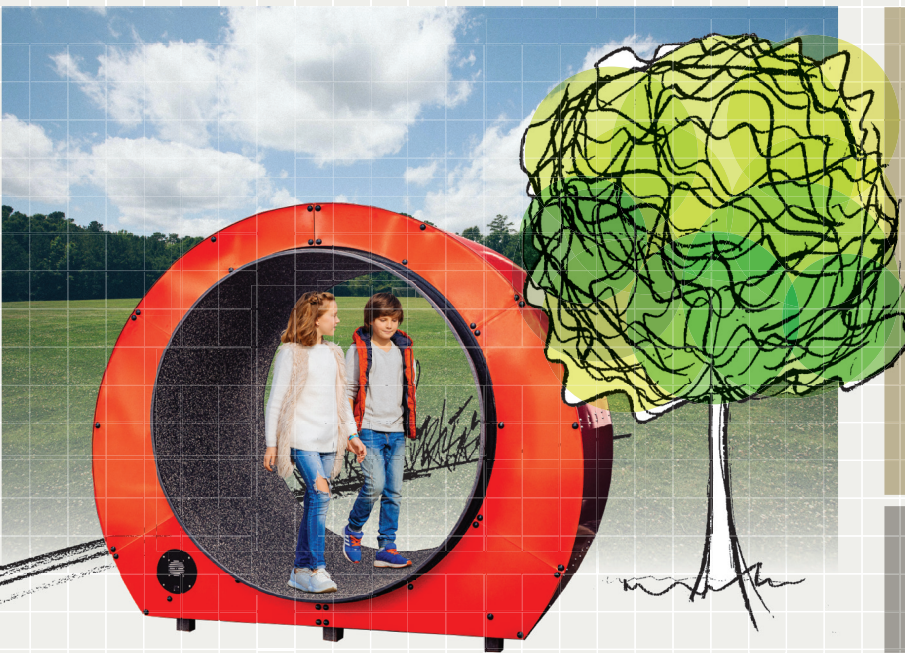
FACTS ABOUT ENERGYWHEEL

- URBAN SPACE CIRCLE

With the interactive EnergyWheel, everything can run in circles and support the idea of circular economy - create the electricity you consume yourself! The energy that you create can be converted into sound, light or charging of, for example, the mobile phone or iPad.

It is the perfect addition to kindergartens and schools that want to create focus on movement, sustainable energy, and technology. Let the kids tumble around in the drum, create kinetic energy, and turn it into sound or charge your mobile phone.

You get the opportunity to train your motor skills - it requires concentration and good balance to keep the Energy Wheel running. Create a natural gathering place where young people can meet, listen to music and dance (maybe).



IMPORTANT KNOWLEDGE

- ✓ Minimal maintenance and operating costs
- ✓ Easy and quick installation
- ✓ Resilient, vandalism proof installation
- ✓ No electrical installations - the user creates the power!
- ✓ The power is converted to sound, light or water play
- ✓ Software for reading usage statistics
- ✓ On and off function in special times with timelock
- ✓ Ideal for children +3 years
- ✓ Adjustable volume button
- ✓ Does not require fall pads
- ✓ User-friendly interactive operation
- ✓ Built in two standard sizes Ø1.4 and Ø1.7 m.

BONUS INFORMATION

INFORMATION The desire for learning is strengthened through experiments, experiences, and senses, which is why many people use the Energy Wheel as a pedagogical learning tool for the formation of children's technological skills. Read more at www.energileg.com about Digitalt LydLab and LæringsPortal



TECHNICAL DATA

Create a cool atmosphere

PRODUCT INFORMATION

MATERIALS

Facade cladding: optional
(wood, steel or plastic)
Cylindric drum: steel and recycled rubber

ASSEMBLY

The EnergyWheel must be mounted on a level, stable and sustainable surface - a falling surface is not a requirement.



COLOURS

All RAL-Colours is possible

APPROVAL

EN-1176

WARRANTY

3-year full manufacturer warranty. Movable parts or "wear" parts are not covered by the warranty. Damage caused by improper use or vandalism is not covered by the warranty. We offer free spare parts within the warranty period, but only if the product had proper maintenance according to maintenance instructions

FALL HEIGHT

25 cm.

SAFETY ZONE

1.5 m all the way around

WEIGHT

Approx. 690 kg

DIMENSIONS

267 x 228 x 145 cm.

ENERGY SOURCE

Kinetic energy

TEKNOLOGY

USB-plug

WEATHER RESISTANCE

All kinds of weather

OUTPUT

Power is converted to sound, light, water play or mobile phone charging

IDEAL AGE GROUP

Ø1.4 m from 3 years

Ø1.7 m from 10 years

